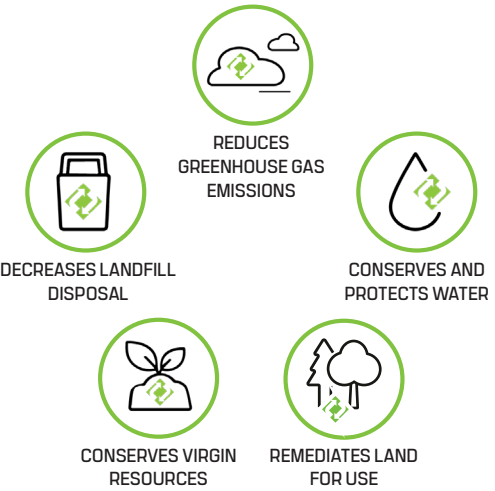


# ENVIRONMENTAL SUSTAINABILITY SERVICES

Sustainability is central to everything we do at Charah Solutions. Our core business is centered on coal ash byproduct management, the beneficial recycling of ash products, and environmental remediation and compliance. We develop innovative sustainable solutions to complex environmental issues for the betterment of the planet and the communities in which we operate.



**SINCE 2020, WE SAVED 13.61 MILLION TONS OF CO<sub>2</sub> FROM ENTERING THE ATMOSPHERE.**

Charah Solutions fly ash improves concrete durability, strength, mixability, and finish. This concrete is used to build infrastructure to keep the economy moving.

ROADS	BRIDGES	CONCRETE PIPE	PRECAST PRODUCTS
DAMS	BUILDINGS	CONCRETE BLOCK	READY MIX CONCRETE

**FOR EVERY TON OF FLY ASH USED TO REPLACE TRADITIONAL CEMENT, .87 TONS OF CO<sub>2</sub> IS SAVED FROM ENTERING THE ATMOSPHERE**

## POWER PLANT

Coal ash is generated by burning coal in the boiler furnace, which creates bottom ash. The ash then goes into the electrostatic precipitator or fabric filter, which creates fly ash, then into the flue gas desulfurization (FGD), creating gypsum - all byproducts are managed by Charah Solutions and can be beneficially used, creating a sustainable process.

### BENEFICIAL USE of CCPs

Charah Solutions manages the coal combustion products (CCPs) including fly ash, bottom ash, conditioned ash, ponded ash, and gypsum, which are collected and beneficially used in products for multiple industries. By beneficially using ash and supplementary cementitious materials (SCMs) each year, we dramatically reduce greenhouse gas emissions and the amount of waste sent to landfills.

Fly Ash Ready Mix Concrete	Fly Ash Structural Fill	Ponded Ash Kiln Feed	Bottom Ash Cinder Block
Conditioned Ash Kiln Feed	Gypsum Drywall	Oil Wells	Gypsum Fertilizer

**SINCE 2020, WE HAVE BENEFICIALLY RECYCLED 15.83 MILLION TONS OF CCPs.**

<b>DRY FLY ASH FOR READY MIX CONCRETE</b>	<b>CONDITIONED FLY ASH FOR STRUCTURAL FILL</b>	<b>GYPSUM FOR DRYWALL</b>	<b>GYPSUM FOR AG FERTILIZER</b>
Class C and Class F fly ash is transported via truck, barge, or rail to ready mix concrete producers where it is beneficially used by mixing with other ingredients to produce concrete.	Charah Solutions manages the design, construction, and operation of structural fill projects in which the land is reclaimed and used for community or business use.	Raw gypsum byproduct is sold to drywall manufacturing plants, where it is beneficially used in residential and commercial construction projects.	Raw gypsum byproduct is sold to growers where it is beneficially used as agriculture fertilizer to enhance soil health and improve plant nutrition.

## ASH POND MANAGEMENT

Charah Solutions manages the design, construction, operation, and remediation of on-site ash ponds to enable the safe and compliant beneficial use of these byproduct materials.

<b>BENEFICIATED ASH – ENVIROSOURCE™</b>	<b>CONDITIONED FLY ASH FOR STRUCTURAL FILL</b>
Pond ash is beneficiated making formerly unusable fly ash stored in ponds and landfills immediately marketable to be beneficially used in the production of concrete.	Charah Solutions manages the design, construction, and operation of structural fill projects in which the land is reclaimed and used for community or business use.

## POWER PLANT DECOMMISSIONING AND DEMOLITION

Through our Environmental Risk Transfer (ERT) services, we take full ownership of decommissioned power plants and land from the utility. We demolish the power plant and recycle the steel and other metals. The land is also fully remediated and redeveloped for use, which includes community use, renewable energy, agricultural, commercial, or other industrial redevelopment opportunities.

<b>RECYCLED STEEL FOR INDUSTRIAL USE</b>	<b>LAND REMEDIATION/ REDEVELOPMENT</b>
Steel from the demolished plant and other facilities is collected and recycled where it is then beneficially used to produce products for the automotive, construction, furniture, and other industries.	Upon demolition of the power plant, the land is remediated and redeveloped for community use, renewable energy, agricultural, commercial, or other industrial redevelopment opportunities.

**BUILD PARKS, GREEN SPACES, NATURAL HABITATS, AND COMMERCIAL SPACES.**

**SINCE 2015, CHARAH SOLUTIONS HAS RECLAIMED APPROXIMATELY 5,370 ACRES OF LAND FOR COMMUNITY USE.**

**SINCE 2020, CHARAH SOLUTIONS HAS DIVERTED 15.83 MILLION TONS OF MATERIAL FROM LANDFILLS.**

